

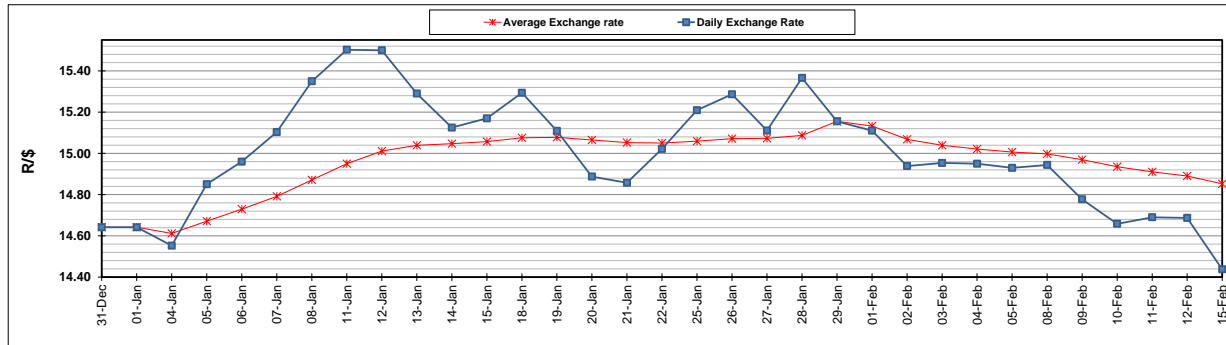
	PETROL 95 ULP	PETROL 93 ULP & LRP	DIESEL 0.05%	DIESEL 0.005%	ILL. PAR.
GAUTENG PUMP PRICE (SA c/l) AS FROM 03/02/2021	1,567.000	1,550.000	-	-	-
WHOLESALE PRICE (SA c/l) AS FROM 03/02/2021	-	-	1,358.420	1,360.820	798.688
SINGLE NATIONAL MAXIMUM RETAIL PRICE	-	-	-	-	1,008.000
BASIC FUEL PRICE - 15/02/2021 (SA c/l)	652.490	643.642	650.390	653.955	630.532
PRESS RELEASE CONTRIBUTION TO BFP 03/02/2021 - 15/02/2021 (SA c/l)	600.170	593.170	599.630	602.030	586.128
UNIT OVER/(UNDER) RECOVERY - 15/02/2021 (SA c/l)	(52.320)	(50.472)	(50.760)	(51.925)	(44.404)
AVERAGE BASIC FUEL PRICE 29/01/2021 - 15/02/2021	635.378	626.699	630.738	634.469	611.839
AVERAGE UNIT OVER/(UNDER) RECOVERY 29/01/2021 - 15/02/2021	(55.458)	(53.779)	(45.608)	(47.189)	(40.461)

ANALYSIS MOVEMENT OF AVERAGE OVER/(UNDER) RECOVERY

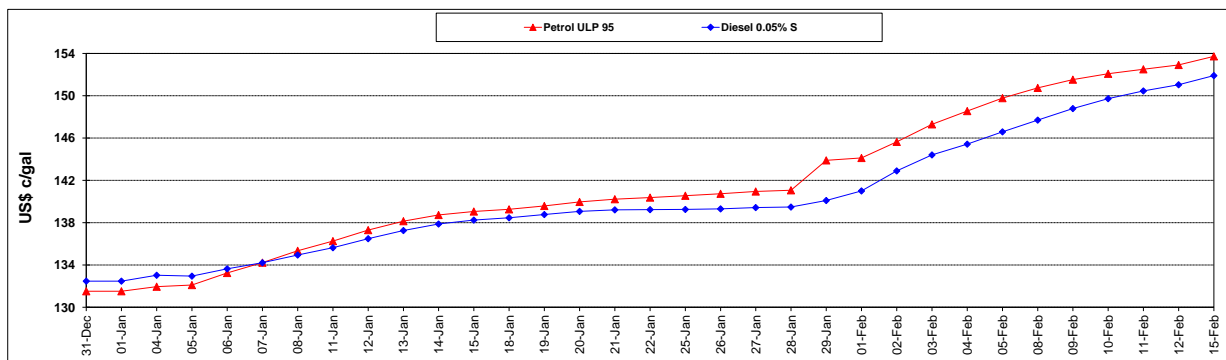
	PETROL 95	PETROL 93	DIESEL 0.05%	DIESEL 0.005%	ILL. PAR.
- MOVEMENT IN INTERNATIONAL PRODUCT PRICES	(65.494)	(63.678)	(55.571)	(57.211)	(50.125)
- MOVEMENT IN EXCHANGE RATE	10.036	9.899	9.963	10.022	9.664
AVERAGE UNIT OVER/(UNDER) RECOVERY 29/01/2021 - 15/02/2021	(55.458)	(53.779)	(45.608)	(47.189)	(40.461)

R/\$ EXCHANGE RATE - (R/\$14.4378 - 15/02/2021)

EXCHANGE RATE USED IN BASIC FUEL PRICE



INTERNATIONAL PRODUCT PRICES OF BASKET USED IN BASIC FUEL PRICE



BASIC FUEL PRICE IN SA CENTS PER LITRE

